

VIC & LAMBERT

CONDOS • SAINT-LAMBERT



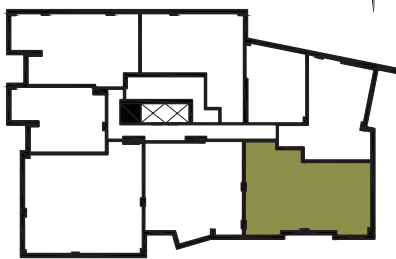
MODEL B1

1218 SQ. FT.

RELATED UNITS

101 201 301 401*

Floors
G, 2, 3 & 4



Riverside Drive

- | | |
|-------------------------------------------------------|-----------------------------------------|
| 1 Living Room / Dining Room
21'-5" X 14'-4" | 6 Bathroom 2
5'-4" X 8'-0" |
| 2 Kitchen
8'-4" X 12'-6" | 7 Laundry Room
5'-7" X 3'-11" |
| 3 Bedroom 1
12'-0" X 14'-0" | 8 Balcony
16'-3" x 6'-4" |
| 4 Bedroom 2
12'-0" X 9'-8" | |
| 5 Bathroom 1
5'-4" X 12'-2" | |

VICLAMBERT.CA



* Units 401 (1177 sq. ft.) and 402 (1082 sq. ft.) are slightly different in size than the other units.

Note: The dotted line indicates the level of the dropped ceiling.

Unit dimensions, prices and features are provided solely as a guide and are subject to change without notice.