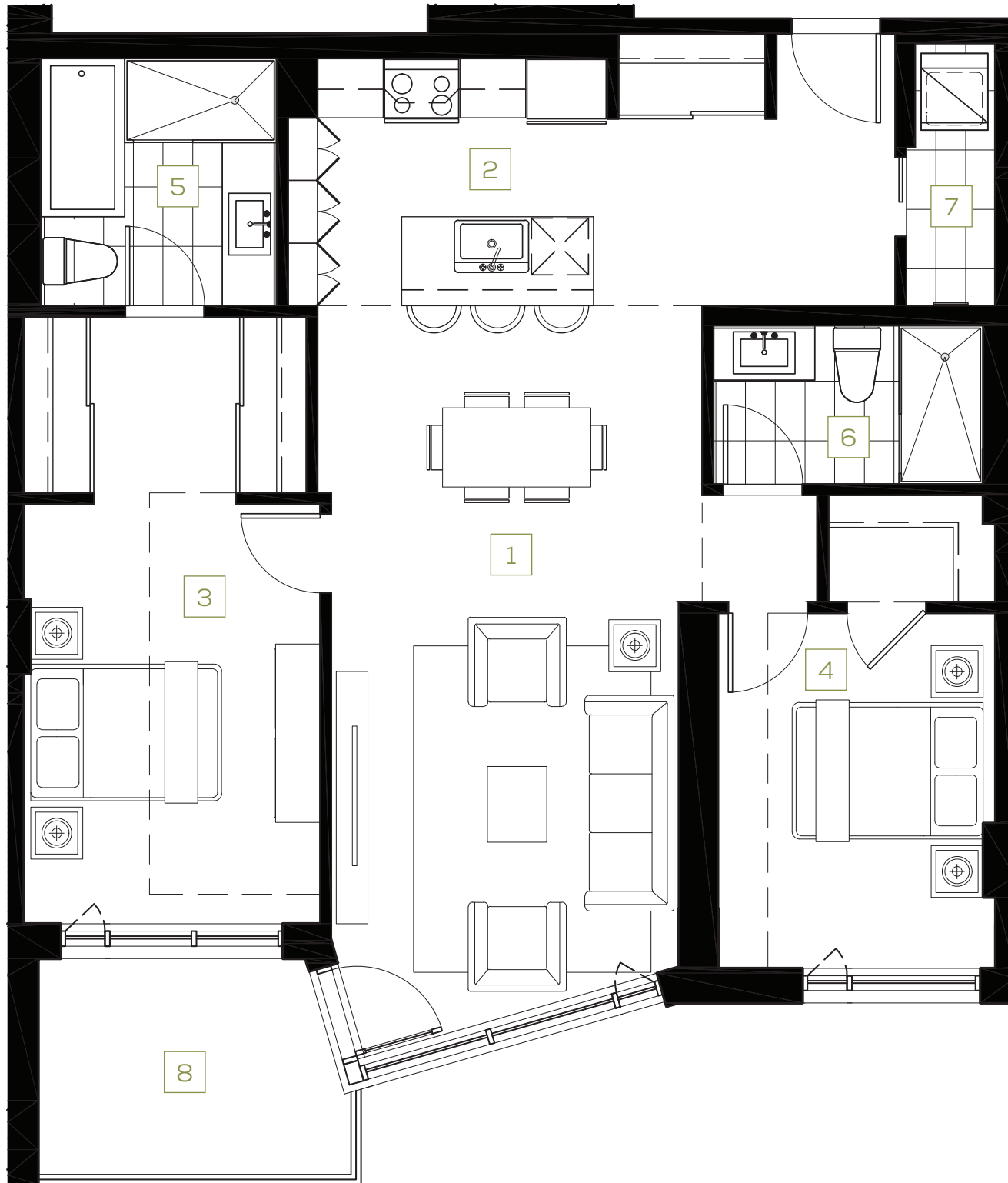


VIC & LAMBERT

CONDOS • SAINT-LAMBERT



MODEL B2

1096 SQ. FT.

RELATED UNITS

102 202 302 402*

Floors
G, 2, 3 & 4



Riverside Drive

- | | |
|---|---|
| 1 Living Room / Dining Room
11'-9" X 25'-3" | 6 Bathroom 2
9'-0" X 5'-4" |
| 2 Kitchen
10'-9" X 8'-4" | 7 Laundry Room
3'-0" X 8'-10" |
| 3 Bedroom 1
10'-0" X 14'-2" | 8 Balcony
10'-6" x 7'-3" |
| 4 Bedroom 2
9'-4" X 12'-0" | |
| 5 Bathroom 1
7'-11" X 8'-4" | |

VICLAMBERT.CA



* Units 401 (1177 sq. ft.) and 402 (1082 sq. ft.) are slightly different in size than the other units.
Note: The dotted line indicates the level of the dropped ceiling.

Unit dimensions, prices and features are provided solely as a guide and are subject to change without notice.