

# VIC & LAMBERT

CONDOS • SAINT-LAMBERT



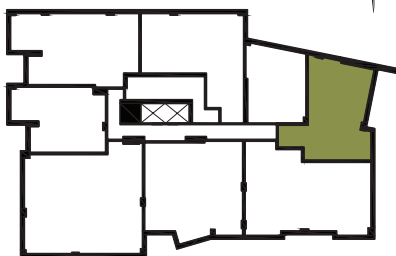
## MODEL B5

852 SQ. FT.

RELATED UNITS

**108 208 308 408**

Floors  
**G, 2, 3 & 4**



Riverside Drive

- 1** Living Room / Dining Room  
11'-0" X 22'-2"
- 2** Kitchen  
9'-8" X 8'-6"
- 3** Bedroom 1  
14'-1" X 9'-7"
- 4** Bedroom 2  
11'-1" X 11'-2"
- 5** Bathroom  
5'-4" X 8'-0"
- 6** Laundry Room  
3'-0" X 3'-3"
- 7** Balcony  
6'-8" X 19'-6"

VICLAMBERT.CA



Note: The dotted line indicates the level of the dropped ceiling.  
Unit dimensions, prices and features are provided solely as a guide and are subject to change without notice.