

VIC & LAMBERT

CONDOS • SAINT-LAMBERT



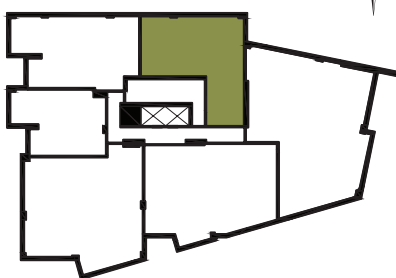
MODEL B6

957 SQ. FT.

RELATED UNITS

506 606

Floors
5 & 6



Riverside Drive

- 1 Living Room / Dining Room
12'-0" X 21'-2"
- 2 Kitchen
8'-1" X 10'-0"
- 3 Bedroom 1
9'-9" X 13'-8"
- 4 Bedroom 2
9'-5" X 9'-4"
- 5 Bathroom
11'-7" X 5'-4"
- 6 Laundry Room
4'-1" X 5'-7"
- 7 Balcony
97 SQ. FT.

VICLAMBERT.CA



Note: The dotted line indicates the level of the dropped ceiling.
Unit dimensions, prices and features are provided solely as a guide and are subject to change without notice.