

# VIC & LAMBERT

CONDOS • SAINT-LAMBERT



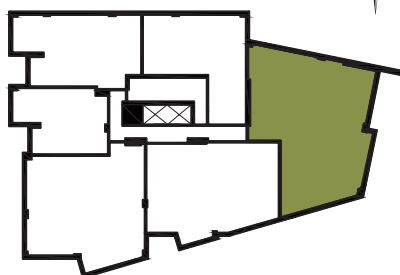
## MODEL C2

1928 SQ. FT.

RELATED UNITS

**501**

Floor  
**5**



Riverside Drive

- |   |   |
|---|---|
| <b>1</b> Living Room / Dining Room<br>22'-1" X 27'-5" | <b>6</b> Bathroom 1<br>15'-2" X 5'-4"   |
| <b>2</b> Kitchen<br>8'-6" X 25'-3"                    | <b>7</b> Bathroom 2<br>5'-4" X 9'-8"    |
| <b>3</b> Bedroom 1<br>14'-2" X 16'-2"                 | <b>8</b> Laundry Room<br>5'-11" X 6'-6" |
| <b>4</b> Bedroom 2<br>11'-1" X 13'-0"                 | <b>9</b> Balcony<br>6'-8" X 19'-6"      |
| <b>5</b> Bedroom 3<br>11'-0" X 13'-8"                 | <b>10</b> Terrace<br>30'-0" X 13'-6"    |

VICLAMBERT.CA



Note: The dotted line indicates the level of the dropped ceiling.  
Unit dimensions, prices and features are provided solely as a guide and are subject to change without notice.