

VIC & LAMBERT

CONDOS • SAINT-LAMBERT



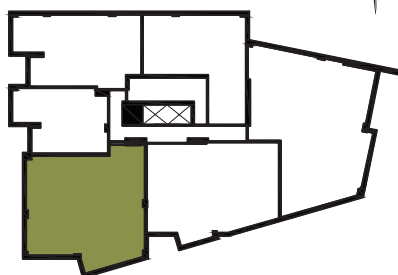
MODEL C4

1552 SQ. FT.

RELATED UNITS

503 603

Floors
5 & 6



Riverside Drive

- | | |
|-----------------------------------|---------------------------------|
| 1 Living Room
12'-9" X 13'-10" | 6 Bedroom 3
10'-0" X 9'-0" |
| 2 Dining Room
14'-2" X 17'-0" | 7 Bathroom 1
5'-4" X 12'-9" |
| 3 Kitchen
11'-0" X 8'-6" | 8 Bathroom 2
5'-4" X 8'-8" |
| 4 Bedroom 1
11'-10" X 18'-9" | 9 Laundry Room
5'-9" X 8'-1" |
| 5 Bedroom 2
12'-4" X 9'-6" | 10 Balcony
7'-1" X 20'-6" |

VICLAMBERT.CA

LSR
GESDEV

Sotramont

FONDS
immobilier de solidarité FTQ

Note: The dotted line indicates the level of the dropped ceiling.
Unit dimensions, prices and features are provided solely as a guide and are subject to change without notice.