

VIC & LAMBERT

CONDOS • SAINT-LAMBERT



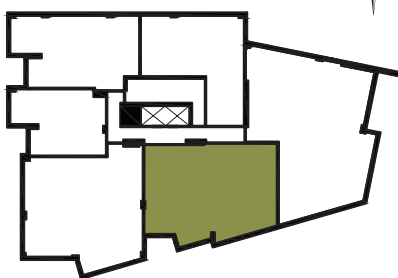
MODEL C6

1451 SQ. FT.

RELATED UNITS

602

Floor
6



Riverside Drive

- | | |
|--------------------------------------------------------|----------------------------------------|
| 1 Living Room / Dining Room
11'-9" X 25'-11" | 6 Bathroom 1
5'-4" X 13'-0" |
| 2 Kitchen
13'-1" X 8'-6" | 7 Bathroom 2
5'-4" X 8'-7" |
| 3 Bedroom 1
10'-7" X 16'-10" | 8 Laundry Room
5'-6" X 5'-2" |
| 4 Bedroom 2
10'-0" X 12'-7" | 9 Balcony
10'-6" X 7'-3" |
| 5 Bedroom 3
9'-7" X 16'-3" | |

VICLAMBERT.CA

LSR
GESDEV

Sotramont

FONDS
immobilier de solidarité FTQ

Note: The dotted line indicates the level of the dropped ceiling.
Unit dimensions, prices and features are provided solely as a guide and are subject to change without notice.